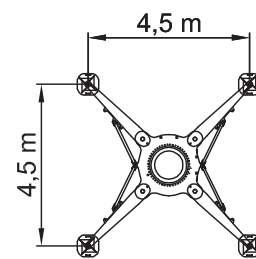
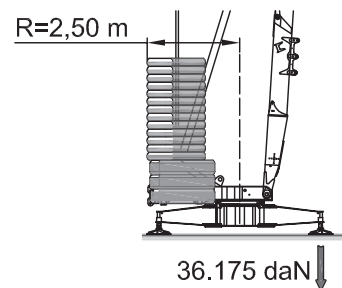


	400V (±10%) 50 Hz		12kVA		
	m/l'	▶	▶▶	▶▶▶	▶▶▶▶
	kg	6	20	42	50
	kW	3000	3000	1200	800
11 (Inverter)					
	340T2		400V (±10%) 50 Hz		18kVA
	m/l'	▶	▶▶	▶▶▶	▶▶▶▶
	kg	6,3	21	31	48
	kW	4000	4000	1400	1400
15 (Inverter)					
	m/l'	▶	▶▶	▶▶▶	
	kW	17,3	28,6	53,5 (↗39,3)	
3 (Inverter)					
	n/l'	▶	▶▶	▶▶▶	
	kW	0,12	0,22	0,6	
2.2 (Inverter)					
	min	▶		18.500 kg	
	kW	3			8.100 kg + 19.500 kg
	8100 kg	5400 kg	2700 kg	0 kg	
P1	12529 kg 11668 kg *	10344 kg 9514 kg *	8160 kg 7360 kg *	5975 kg 5206 kg *	
P2	14446 kg 15307 kg *	13931 kg 14761 kg *	13415 kg 14215 kg *	12900 kg 13669 kg *	



Alle technischen Angaben ohne Gewähr. Irrtümer und Änderungen vorbehalten.  
All technical data is without guarantee, errors and changes are reserved.

Am Dornbusch 10  
64390 Erzhausen  
www.eurogru.de

Telefon: +49 (0) 6150 13440  
Fax: +49 (0) 6150 7002  
Email: kontakt@eurogru.de

**EUROGRU**<sup>®</sup>  
BAUKRANE SEIT 1962