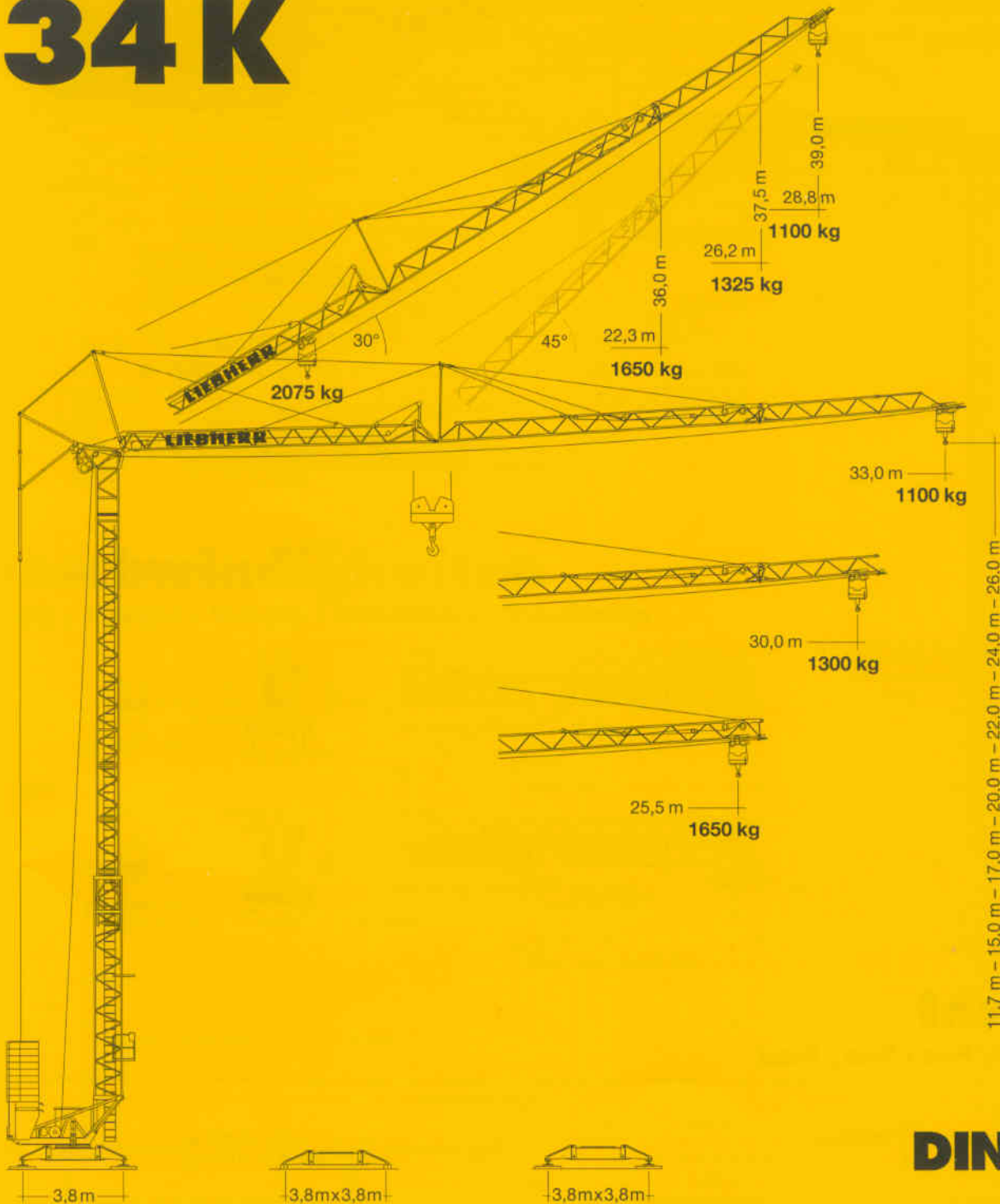


**Tower Crane / Grue à tour / Gru a torre  
Grúa torre / Guindaste de torre**

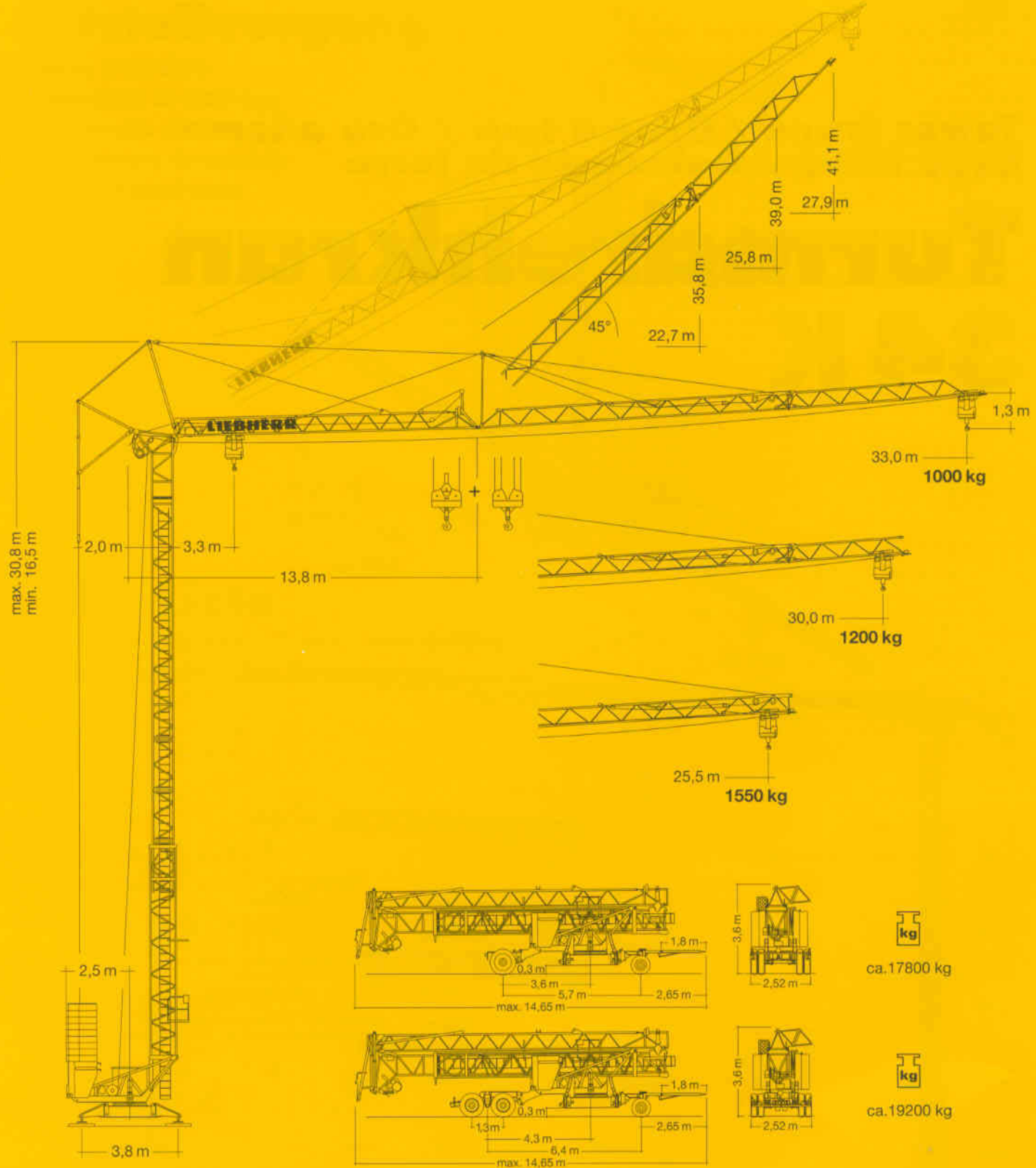
# Turmdrehkran 34 K



**DIN/FEM**

1 : 236

# LIEBHERR



# Gewicht

Weight / Poids / Peso / Peso / Pesos

	$r = 2,5 \text{ m}$	18980 kg		ca. 10400 kg (26 m: + 1050 kg)
--	---------------------	----------	--	-----------------------------------

# 34 K

# Ausladung und Tragfähigkeit

Radius and capacity / Portée et charge / Sbraccio e portata / Alcances y cargas / Alcance e capacidade de carga

m	max. kg m/kg	m/kg																						
		10,0	11,0	12,0	13,0	14,0	15,0	16,0	17,0	18,0	19,0	20,0	21,0	22,0	23,0	24,0	25,5	26,0	27,0	28,0	29,0	30,0	31,0	32,0
33,0	3,3 - 17,40 2075	2075	2075	2075	2075	2075	2075	2075	2075	1990	1870	1750	1650	1560	1480	1410	1310	1275	1220	1160	1120	1100	1100	1100
30,0	3,3 - 18,40 2075	2075	2075	2075	2075	2075	2075	2075	2075	2075	2000	1880	1770	1680	1590	1510	1400	1370	1310	1300	1300	1300	1300	1300
25,5	3,3 - 19,50 2075	2075	2075	2075	2075	2075	2075	2075	2075	2075	2075	2075	2010	1890	1790	1700	1650	1650						

m	max. kg m/kg	m/kg																							
		10,0	11,0	12,0	13,0	14,0	15,0	16,0	17,0	18,0	19,0	20,0	21,0	22,0	23,0	24,0	25,5	26,0	27,0	28,0	29,0	30,0	31,0	32,0	33,0
33,0	3,3 - 17,06 2000	2000	2000	2000	2000	2000	2000	2000	2000	2000	1870	1750	1640	1740	1450	1370	1300	1200	1170	1110	1060	1010	1000	1000	1000
30,0	3,3 - 18,10 2000	2000	2000	2000	2000	2000	2000	2000	2000	2000	1880	1770	1660	1560	1480	1400	1300	1270	1210	1200	1200	1200	1200	1200	
25,5	3,3 - 19,19 2000	2000	2000	2000	2000	2000	2000	2000	2000	2000	1900	1790	1690	1600	1550	1550									

m	max. kg m/kg	m/kg																						
		10,0	11,0	12,0	13,0	14,0	15,0	16,0	17,0	18,0	19,0	20,0	21,0	22,0	23,0	24,0	25,5	26,0	27,0	28,0	29,0	30,0	31,0	32,0
33,0	3,3 - 9,91 4000	3950	3490	3120	2820	2570	2350	2170	2010	2000	1890	1780	1680	1590	1510	1400	1360	1300	1240	1180	1130	1090	1040	1000
30,0	3,3 - 10,46 4000	4000	3750	3350	3030	2760	2530	2400	2400	2280	2130	2000	1880	1780	1680	1590	1510	1440	1370	1310	1250	1200	1200	1200
25,5	3,3 - 11,04 4000	4000	4000	3600	3250	3100	2990	2760	2560	2390	2230	2100	1970	1860	1760	1670	1550							

m	max. kg m/kg	Auslegersteilstellung 30° / Elevated jib 30° / Flèche inclinée 30° Braccio inclinato a 30° / Pluma inclinada 30° / Lança inclinada 30°													
		16,0	17,0	18,0	19,0	20,0	21,0	22,3	23,0	24,0	25,0	26,2	27,0	28,0	28,8
33,0	3,0 - 16,48 2075	2075	2000	1850	1730	1620	1520	1400	1350	1280	1210	1140	1100	1100	1100
30,0	3,0 - 17,15 2075	2075	2075	1950	1820	1710	1600	1480	1430	1350	1325	1325			
25,5	3,0 - 17,76 2075	2075	2075	2040	1910	1790	1680	1650							

# Geschwindigkeiten

Speeds / Vitesses / Velocità / Velocidades / Velocidades

	U/min. 0 ↔ 0,9 st./min tr./min	2,2 kW, EDC		<b>Stufe / Step / Cran</b> Marcia / Velocidad Velocidade	kg	m/min
	20,0 / 40,0 m/min	1,3 / 2,3 kW	11,0 kW	1	2075	6,0
	25,0 m/min	2 x 1,3 kW	11,0 kW	2	2075	25,0
	0 - 45° ca. 30 sec.	2,2 kW	11,0 kW	3	1075	50,0
				1	2000	6,0
				2	4000	3,0
				3	2000	25,0
				4	4000	12,5
				5	1000	50,0
				6	2000	25,0
				7	2000	3,0
				8	4000	1,5
				9	2000	30,0
				10	4000	15,0
				11	1500	40,0
				12	3000	20,0
				13	1000	55,0
				14	2000	27,5

	400 V	Hz	kVA
78,0 m	4 x 6 mm <sup>2</sup> (KL) 4 x 6 mm <sup>2</sup> (FU)	50	22,0 (KL) 17,0 (FU)

**BGL:** 2108-0040 2108-035,5

# Technische Daten

Technical data - Caractéristiques techniques

Caratteristiche tecniche - Características técnicas - Datos técnicos



# Aufstellvorgang

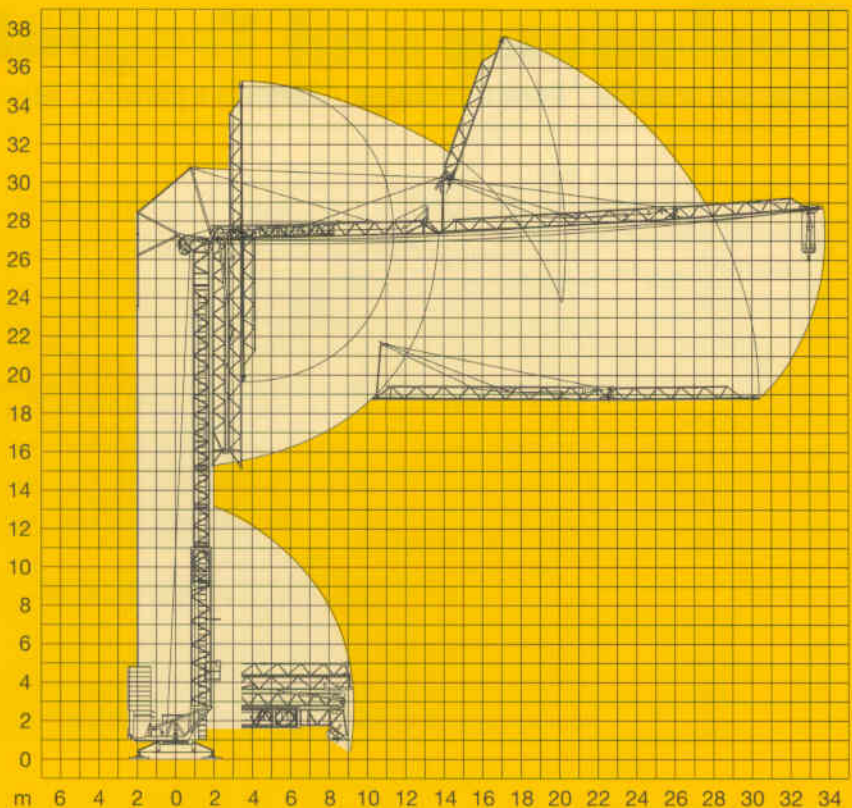
Erection procedure

Déroulement de montage

Procedimento di montaggio

Procedimiento de montaje

Sistema de montagem



## Kolli-Liste

Packing List / Liste de colisage / Lista dei colli

Lista de contenido / Lista de embalagem

Pos. Item Rep. Voce Pos. Ref.	Anz. Qty. Qte. Qta. Cant. Cant.			L (m)	B (m)	H (m)	kg
1	3	<b>Turmstück / Tower section</b> Elément de mât / Elemento di torre Tramo de torre / Peça de torre		2,10	0,85	0,88	350
2	1	<b>Ausleger-Verlängerung 25,5 m – 30,0 m</b> Jib extension / Rallonge de la flèche Elemento estensione braccio Prolongación de pluma / Extensão da lança		4,70	0,80	0,70	180
3	1	<b>Ausleger-Verlängerung 30,0 m – 33,0 m</b> Jib extension / Rallonge de la flèche Elemento estensione braccio Prolongación de pluma / Extensão da lança		3,10	0,80	0,70	65
4	1	<b>Transportachse vorne Tra 100 KY 2</b> Road transport axle front / Essieux de transport avant / Asse di trasporto anteriore / Eje delantero para transporte / Eixo de transporte dianteiro		3,00	1,13	0,97	660
5	1	<b>Transportachse hinten Tra 120 GY 1A</b> Road transport axle behind / Essieux de transport arrière / Asse di trasporto posteriore / Eje trasero para transporte / Eixo de transporte traseiro		1,90	2,50	1,05	1150
6	1	<b>Transportachse Tra 200 GZ 3 / Road transport axle</b> Essieux de transport / Assali par trasporto Tra 200 GZ 3 / Eje de transporte Eixo de transporte		3,10	2,50	1,10	2600
7	1	<b>Kiste mit Seilen und Kleinteilen / Case with ropes and small parts</b> Caisse avec câbles et pièces détachées / Cassa con funi e accessori Caja con cables y piezas sueltas / Caixa contendo cabos e acessórios		1,00	0,80	1,00	450

120 P – 3861 H1 B3 DIN 15018 • BGL 2108-0040 / FEM (Section 1) Krangruppe A3 und OENORM T3 • 03.01 / 6

Konstruktionsänderungen vorbehalten! / Subject to alterations!  
Sous réserves de modifications! / Si fa riserva di modifiche!  
Salvo modificação da construçao! / ¡Sujeto a modificaciones!

Printed in Germany.